



Instruction Manual

HAND SANDER WALL LXM-CS



PLEASE READ THE MANUAL AND KEEP IT IN A PLACE WITH EASY ACCESS FOR REFERENCE BEFORE INSTALLING, ASSEMBLY AND OPERATING THE MACHINE. USE PERSONAL PROTECTIVE EQUIPMENT AND OBSERVE ALL SAFETY INFORMATION. OPERATE IN DISAGREEMENT WITH THIS MANUAL MAY CAUSE DAMAGE TO THE OPERATOR AND ALSO DAMAGE THE PRODUCT.



www.nauber.com.br

1. PRODUCT DESCRIPTION

This machine is designed for sanding internal and external masonry walls, plaster and spackle. Attention! You are machines not suitable for processing the object that contains asbestos. Please take all safety precautions when using this equipment. Please read this manual before operating the equipment.

2. TECHNICAL SPECIFICATIONS

Model	LXM-CS
Power	800W
Adjustment Speed	1.200-2.300 RPM
Sanding disc diameter	185mm
Diameter of dish	190mm
Tube diameter	32mm
Net weight	2,27 Kg

220 Volts / 60Hz

3. SAFETY INSTRUCTIONS



Attention! Read and follow all safety instructions.

Read the operating instructions before using the device. Familiarize yourself with the functions and mode of operation. Keep the Product Manual in an easily accessible place for reference.

3.1 Desktop Safety Tips

- Keep the workplace clean and tidy.
- Do not work near explosive material, atmosphere or liquids.
- Keep children or unprepared persons away from the workplace.

3.2 Electrical Safety Tips



Attention! Always check that the mains voltage corresponds to the voltage stated on the product nameplate.

- Do not modify the original cable length and never alter the machine's original plug.
- Avoid contact of body parts with electrical wires or suction tubes.
- Do not expose the sander to rain or wet conditions.
- Never pull or transport the sander using the power cord.
- Keep the power cord away from sharp objects or moving objects.
- If wet location operation cannot be avoided, please protect the wiring in order to avoid shorting.

3.3 Personal Safety Tips

- Always be alert.
- Never use the equipment when tired or under the influence of drugs, alcohol or strong medications.

- c) Wear personal protective equipment such as gloves, masks and safety glasses.
- d) When operating, remain upright and on a secure and balanced base at all times.
- f) Do not wear loose clothing and always keep your hair up.

3.4 Main care

- a) Do not force the sander too hard against the wall.
- b) Always turn off the sander before making any repairs or removing or adapting any accessory.
- c) Always keep the product out of reach of children or untrained people.
- d) Preserve your sander. Before operating, make sure that all parts are securely fastened to the equipment.
- e) Keep the equipment clean at all times.
- f) Always use the sander in accordance with the instructions.

3.5 Services and Assistance

- a) The warranty of this equipment is 06 (six) months, which refer to 03 (three months of legal warranty) + 03 (three months of extended warranty from the supplier). During this period, any maintenance must be carried out at a technical assistance registered by Nauber, which can be found at WWW.NAUBER.COM.BR.
- b) Always use original factory parts

4. PRECAUTIONS ABOUT THE CORRECT USE OF THE PRODUCT

Attention! Take all basic measures to avoid electrical shock, injury and burns before using the product.

These instructions must be kept in a safe and easily accessible place.

- a) The equipment must not be used in environments where there is an explosive atmosphere.
- b) Do not use the electrical cord wrapped around your body.
- c) Do not use the machine in work unsuitable for its characteristics. For example; sanding stones, splinters of wood, etc.
- d) In case of repair, use only original parts, otherwise the product warranty may be lost.
- e) When replacing rotating accessories, please couple products compatible with the characteristics of the original ones, so that there are no breaks or cracks in the parts causing damage to the machine and the operator.
- f) Never use the machine without first checking the rotating accessories. If there is any crack, crack or anything suspicious, please do not use the equipment. Take it to a qualified professional for repair.
- g) Never remove the sander from the wall before it has come to a complete stop, otherwise you may lose control of the machine causing an accident and also disproportionately mark or sand the desired surface.
- h) Clean the suction parts of the sander regularly, preferably whenever there are work breaks.
- i) For a better use of the NAUBER sander, always choose the sanding disc that suits the surface and the result.
- j) NAUBER always recommends the use of gloves and safety glasses.

5. BASIC CARE FOR MAINTENANCE

- a) Before any maintenance, always unplug the plug from the socket.
- b) After use, store the equipment in a safe and dry place.
- c) If you notice that any part is out of specification, fitting place, etc., please refer to a qualified professional.
- d) If there are excessive sparks on the carbon brushes, please take them to a specialized technician.
- e) Never clean the machine with solvent or any other product that damages the plastic and avoid excess water in order to prevent its penetration into the interior of the product.

6. HOW TO USE THE NAUBER MOD. LXM -CS



Attention! This equipment has an autonomous suction system, through the turbine positioned on top of the equipment's engine. It is essential that after use, the suction holes positioned on the sanding base are cleaned, as well as the collection bag cleaning every 1 (one) hour of work.

6.1 Before starting the operation, please check:

- a) Check if the voltage of the electrical network corresponds to those informed on the equipment label.
- b) Before using the equipment, carefully read the Machine Manual.

6.2 How to operate the Nauber LXM -CS sander.

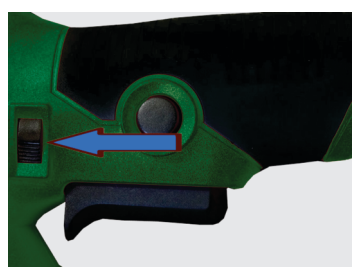
- a) Connect the collector bag hose to the bottom of the sander (As shown in figure 1 -1 and 1-2 below).



- b) Screw the handle onto the side of the sander, as shown below:



- c) Speed adjustment knob from 1200 to 2300 RPM, as shown below:



d) Speed lock button.



e) How to attach the sandpaper to the plate.

- For better suction and maximum use of your equipment, please attach the sandpaper according to the holes in the plate. See below:



Dust suction points on your equipment.

- The powder is suctioned at two points, one in the circular openings of the sandpaper and the other in the peripheral part of the sandpaper.

This entails a great surface finish as well as cleanliness in the workplace



f) Collecting Bag

- The Collector Bag is already connected to the equipment. Always make sure there is no excess dust in the Bag.
- Clean it periodically and whenever you finish your workday.



g) Lighting with LED lamp.

- 3.8W LED to work in dark or low light environments.



g) Suction adjustment knob.

- Clockwise reduces suction.
- Counterclockwise direction increases suction power.



h) Corner grinding system.

- Brush segment can be detachable to facilitate sanding of corners.



7 How to replace the sanding disc base plate

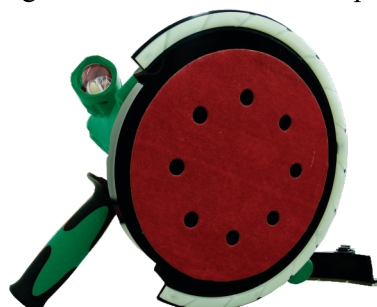
- Insert the size five Allen key (5) into the center screw of the plate.
- hold the plate firmly and turn the allen wrench until the screw is released.
- After removing the old dish, put the new one and do the same procedure.
- The same procedure for preventive cleaning is recommended.



Attention! Only use original Nauber parts!

8 How to attach the sanding disc

- Always use sanding discs with velcro and holes.
- Place the sanding disc on the plate according to the holes for better absorption.



9. WORK TIPS

- a) Always use both hands to control and hold the sander.
- b) Before operating the machine, make sure all parts are secured to the equipment.
- c) Connect the sander to the electrical network only at 220v.
- d) Before turning on the sander, touch it to the surface you want to work on and then turn on the machine. This avoids marking the wall due to first contact.
Turn off the machine with the sander leaning against the surface and after ending the rotation, remove it.
- e) For high walls, make short movements.
- f) For ceilings, make long movements.
- h) For better effect, avoid pressing the machine and friction of the sanding disc.
- i) After use, clean the machine properly.

10. HOW TO CARE AND REPAIR THE NAUBER MOD. LXM-CS

10.1 Initial remarks

- a) To repair or replace parts of the equipment, always remove the plug from the outlet.
- b) Always keep your equipment in a dry and safe place.
- c) If the power cord is damaged, replace it immediately.
- d) If the repair requires a more refined technical qualification, please send the product to the authorized technical assistance.

10.2 Cleaning

- a) Keep safety devices, ventilation and engine as free as possible from dirt and dust.
- b) Clean the equipment with a damp cloth and mild soap. Do not use solvents.
- c) Do not wash with running water or a water jet. Never submerge the equipment.

10.3 Charcoal Brushes

- a) One of the most common symptoms of carbon brush wear is the loss of power in the equipment.

11. COMMON SYMPTOMS AND SOLUTIONS

11.1 The sander is connected to the network but does not work

- a) Check if the cord wires are loose from the machine or if it is not properly plugged into the socket.
- b) Check that there is no break in the power cable.

11.2 When turning on the sander, strange noises are heard in the engine

- a) Check if the engine is not stopped or slow due to accumulation of dirt.
- b) Check if there are no parts blocking the engine.
- c) Too much pressure during the task.

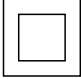



11.3 Engine heats up

- a) Check if any element is not obstructing the ventilation.
- b) Check that the bearing is not damaged.
- c) Check that the operator is not pressing too hard on the equipment when performing the sanding.

11.4 High and frequent sparks in the commutator

- a) Check that there is no short circuit in the motor armature.
- b) Damaged carbon brushes.
- c) Dirty switch.

8. SYMBOLS AND MEANINGS ON THE LABEL OF YOUR SANDER

v	Volts	Hz	Hertz
~	alternating current	W	Watts
n ₀	speed start	/min or min ⁻¹	Speed per minute
	device with class 2 insulation		Please read the manual
	Use of noise muffler		Use security glasses



Before use the equipment read the manual with attention



Always use noise muffler when use this equipment

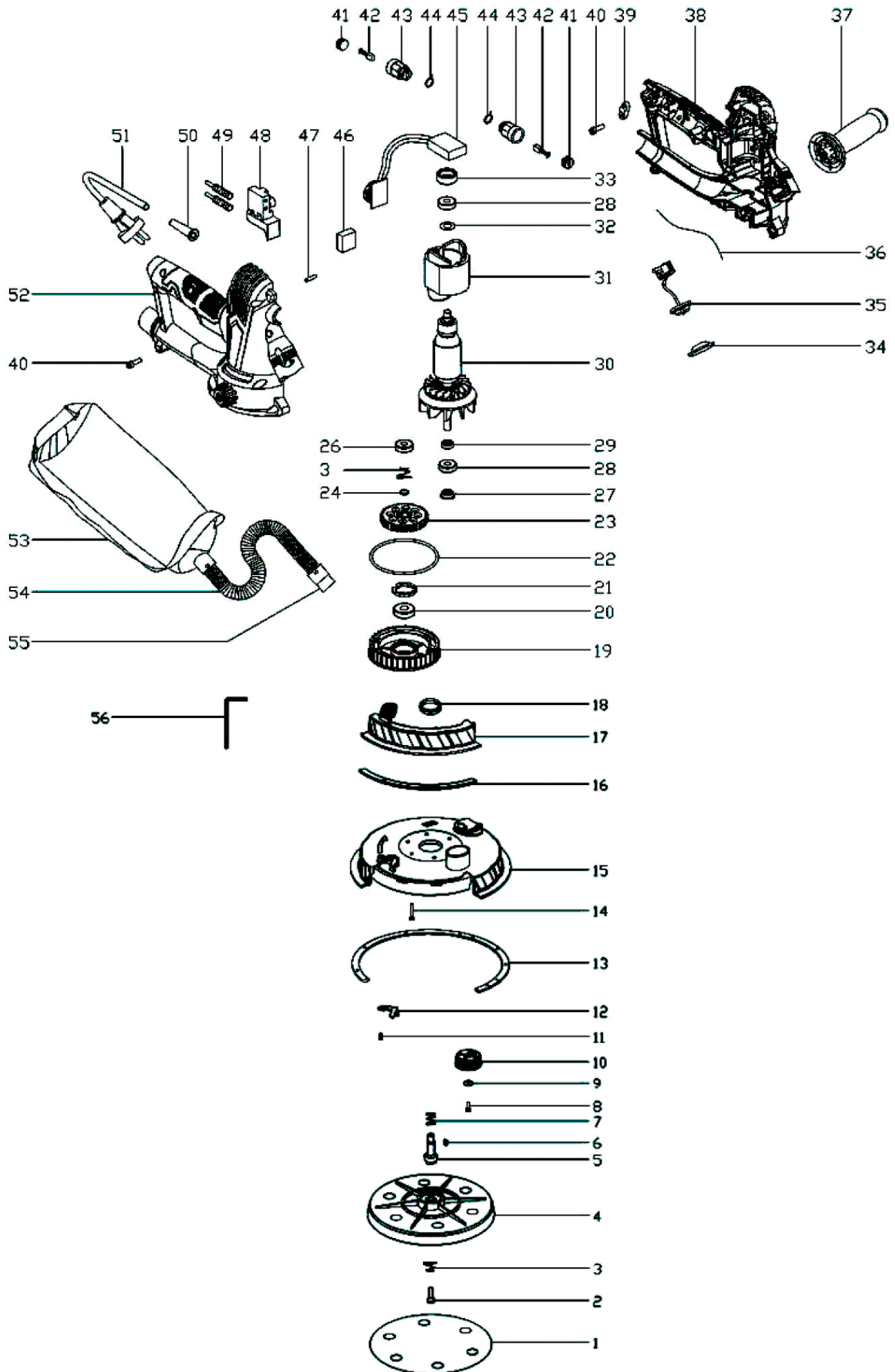


Always use security glasses for this equipment



Always use security mask for this equipment

13. EXPLODED VIEW



72	NAUBER CEILING AND WALL SANDER LXM-CS	565	PART 26 608RS LXM-CS BEARING
542	PART 02 HEX SCREW M6X22 LXM-CS	147	PART 30 NAUBER LXM-CS ROTOR
553	PART 03 WEAR RING LXM-CS	148	PART 31 STATOR LXM-CS
543	PART 03 SPRING TOWER LXM-CS	540	PART 32 LXM-CS FLAT SEALING
544	PART 04 LXM-CS BASE PLATE	541	PART 33 BEARING 22 LXM-CS
545	PART 05 OUTPUT ARROW LXM-CS	538	PART 34 LXM-CS LAMP
546	PART 06 KEY 3X3X8 LXM-CS	537	PART 35 LXM-CS LED COMPONENTS
547	PART 07 COMPRESSION SPRING LXM-CS	539	PART 36 LXM-CS SEALING BELT
548	PART 08 ST4X10 LXM-CS SCREW	525	PART 37 AUXILIARY CUFF LXM-CS
549	PART 09 SEALING 4 LXM-CS	536	PART 38 RIGHT COVER LXM-CS
550	PART 10 LXM-CS ADJUSTMENT KNOB	526	PART 41 BRUSH HOLDER COVER LXM-CS
551	PART 11 ST3X10 LXM-CS SCREW	146	PART 42 PAIR LXM-CS BRUSHES
552	PART 12 SHIELD COVER LXM-CS	527	PART 43 BRUSH HOLDER LXM-CS
677	PART 13 LXM-CS BASE RING	528	PART 44 LXM-CS TENSION SPRING
554	PART 14 ST4X25 LXM-CS SCREW	529	PART 45 LXM-CS SPEED CONTROLLER
555	PART 15 HOOD LXM-CS	530	PART 46 CAPACITOR LXM-CS
556	PART 16 RING B WEAR LXM-CS	531	PART 48 SWITCH BUTTON LXM-CS
557	PART 17 SIDE EDGE LXM-CS	532	PART 49 LXM-CS INDUCER
558	PART 18 SEAL LXM-CS	533	PART 50 LXM-CS CABLE SLEEVE
559	PART 19 LARGE LXM-CS COVER	534	PART 51 LXM-CS ELECTRIC CABLE
560	PART 20 6000RS LXM-CS BEARING	535	PART 52 RIGHT COVER LXM-CS
561	PART 21 NECKLACE LXM-CS	149	PART 53 COLLECTION BAG LXM-CS
562	PART 22 LXM-CS PAPER SEALING	330	PART 54 LXM-CS VACUUM TUBE
563	PART 23 LXM-CS LARGE GEAR	566	PART 56 SEX S5 LXM-CS WRENCH
564	PART 24 RING 10 WIRE LXM-CS		

WARRANTY TERM

Equipment: HAND SANDER WALL LXM-CS

Delivery Technical: No () Yes () Date _____/_____/_____

1) Warranty Conditions:

1.1 Upon receiving the equipment, it is necessary that the buyer verify its conditions, and its set of parts, with any complaint due to lack of objects or other malfunctions only will be accepted if observed at the time of delivery, before the signature of the note stub purchase tax. It must be communicated immediately to the supplier.

1.2 The warranty period for this equipment is 03 (three) months by force of law (legal warranty)+ 03 (three) months of extended warranty, totaling 06 (six) months of warranty, counted from the date of issuance of the invoice.

1.3 By this warranty, the supplier undertakes to repair or replace parts that have manufacturing defects or defects, provided that they are in accordance with the clauses established in this term.

1.4 During the warranty period, any maintenance that is required must be communicated to the supplier, and it may only be carried out with the authorization of the supplier. Such non-compliance will result in the loss of the warranty.

1.5 The warranty is granted on an exclusive basis for any maintenance or repairs are carried out at the supplier company's headquarters. The procedure to trigger the guarantee is will give by sending the email request to the electronic address atendimento@nauber.com.br, informing the problem that occurred, with photos, and wait for their guidelines for sending the equipment by the carrier to the supplier's headquarters to carrying out the assistance.

1.6 Within the warranty period, the freight costs will be borne by the supplier.

1.7 The warranty of the replaced parts are grouped together with the total warranty, not characterizing this forms the extension of the period.

2) Results in loss of Warranty:

2.1 Defects arising from misuse, inadequate transport, loss of parts, lack of cleaning of equipment, or other evidence of factors caused by accident or force of nature, such as; flooding, fires, electrical burns, fall, theft, depredation, and alike. 2.2 If the equipment is used on the electrical network outside the specified standards.

2.3 If it is found that the equipment has been violated, or subjected to technical interventions, it has not authorized by the supplier, as well as replacement of parts, alteration of the electrical circuit or security devices.

2.4 Negligence or malpractice in the use or handling of the equipment by submitting it to applications several of the recommended ones, or the work under excessive force.

3) Items Not Covered by Warranty:

3.1 In the event of the need for technical assistance, the damages do not form part of the guarantee by the stoppage of work, lost profits, expenses with equipment operators, or materials that deteriorate due to the non-functioning of the equipment, as well as, there is no coverage of any personal or material damage to the buyer or to third parties.

3.2 Parts that have wear and tear, such as pistons, are not part of the warranty discs, sandpaper, and others that are related to time of use and natural wear.

3.3 Defects in painting and general functioning caused by external influences, weathering, poor conditioning of the equipment, or exposure to chemical products.

3.4 Noise and other factors that may arise due to abnormal conditions of use.

4) General Provisions:

4.1 If the warranty is triggered, and no defects or manufacturing defects are found, it will be borne of the buyer bearing the expenses of; labor, parts and supplies due to natural wear or misuse, travel expenses, and accommodation.

4.2 It is recommended to the buyer who does not have technical knowledge of using the equipment purchased, contract the technical delivery, which will be charged by the supplier of according to the complexity of each equipment, to be previously combined in separate negotiation.

4.3 No requests for technical assistance will be received outside the afore mentioned conditions in item 1.4, being an indispensable condition for the opening of the call.

4.4 This guarantee will be suspended if the purchase is in default with the supplier. Returning to be in force with the settlement of debts. The supplier reserves the right at any time to change its equipment and technologies or discontinue them, with no obligation to supply parts of models already sold, as well as, it will not characterize defective any equipment already sold with technology inferior to current sales model.